

Collaborative Programs: MA, MSc, PhD

The University of Guelph offers three collaborative graduate programs in the areas of: International Development Studies, Neuroscience and Toxicology.

Collaborative programs provide graduate students with the unique opportunity to enhance their graduate degree and gain an in-depth understanding of how their research interests pertain in the context of their collaborative program. This combination of multidisciplinary studies provides students with a broader academic foundation and additional choices for careers in their discipline.

Collaborative programs are not stand-alone programs, they may only be pursued in conjunction with a program that offers a Master's or Doctoral degree at the University of Guelph. A student can only enter a collaborative program through a department that is willing to collaborate with International Development Studies, Neuroscience, or Toxicology. Students choose their primary department according to their educational background, research interests, availability of an advisor, funding and work experience.

Application & Admission Process

MA/MSc/PhD students interested in pursuing a collaborative program must first meet the admission requirements of the primary program of interest and second the admission requirements of the collaborative program (see department website for specific admission requirements).

When completing the online application, a student will select a primary department of interest and then identify a collaborative program as a secondary focus (i.e. MA.POLS+IDEV, PHD. BMED+TOX, MSC. PSYC+NEUR). A separate application is not submitted to the collaborating department.

If admitted into the primary program, the student's application is forwarded to the collaborative program for consideration. If successful, the student will receive an offer of admission to both the primary and collaborative programs. (Note: collaborative programs are not stand-alone programs and therefore can not be taken independently. If a student is not admitted into the primary program, they cannot be admitted into the collaborative program).

Once admitted, students are required to complete degree requirements for the primary program as well for the collaborative program.

Areas of Study

■ International Development Studies MA, MSc, PhD

Contact: ids@uoguelph.ca
www.ids.uoguelph.ca

■ Neuroscience MA, MSc, PhD

Contact: bmsggrad@uoguelph.ca
www.ovc.uoguelph.ca/biom/collabgrad/neuroscience

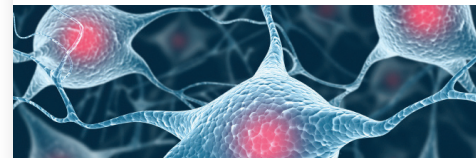
■ Toxicology MSc, PhD

Contact: Graduate Secretary: Karen Ferraro, chemgrad@uoguelph.ca
<http://ovc.uoguelph.ca/biomedical-sciences/collaborative-grad-neuroscience>



International Development Studies commonly collaborates with:

Capacity Development & Extension
Economics
Engineering
Food, Agricultural & Resource Economics
Geography
History
Latin American & Caribbean Studies
Political Science
Rural Planning and Development
Sociology & Anthropology



Neuroscience collaborating departments include:

Animal & Poultry Science
Biomedical Science
Clinical Studies
Human Health & Nutritional Sciences
Integrative Biology
Molecular & Cellular Biology
Psychology



Toxicology commonly collaborates with:

Animal & Poultry Science
Biomedical Sciences
Chemistry
Environmental Sciences
Food Safety and Quality Assurance
Human Health & Nutritional Science
Integrative Biology
Land Resource Science
Mathematics & Statistics
Molecular and Cellular Biology
Pathobiology
Plant Agriculture
Psychology