

# School of English and Theatre Studies: MA

Welcome to the School of English and Theatre Studies and its diverse strengths and extensive scope. Bring your curiosity! Pursue a wide range of literatures of different historical periods and geographical locations. Discover contemporary approaches to the study of literature and theatre, including ecocriticism, intermedial narrative and performance, digital humanities, and critical studies in improvisation.

Open doors to careers in teaching, administration, advertising, research, journalism, publishing, law, arts management, the media, information technology, creative writing, public relations, the entertainment industry and other enterprises requiring analytical, organizational, and creative skills in communications. Feed your mind, broaden your vocabulary, drive your future!

[uoguelph.ca/arts/sets](http://uoguelph.ca/arts/sets)

## Program

**The MA in English** is designed to provide students with an intensive introduction to graduate-level work in English literary studies within a flexible program. The study of literatures in English at the University of Guelph involves a sense of the histories and theories that inform current developments in the field.

Our students emerge from the program well prepared for doctoral study in English, and for careers that require a combination of critical thinking and cultural awareness.

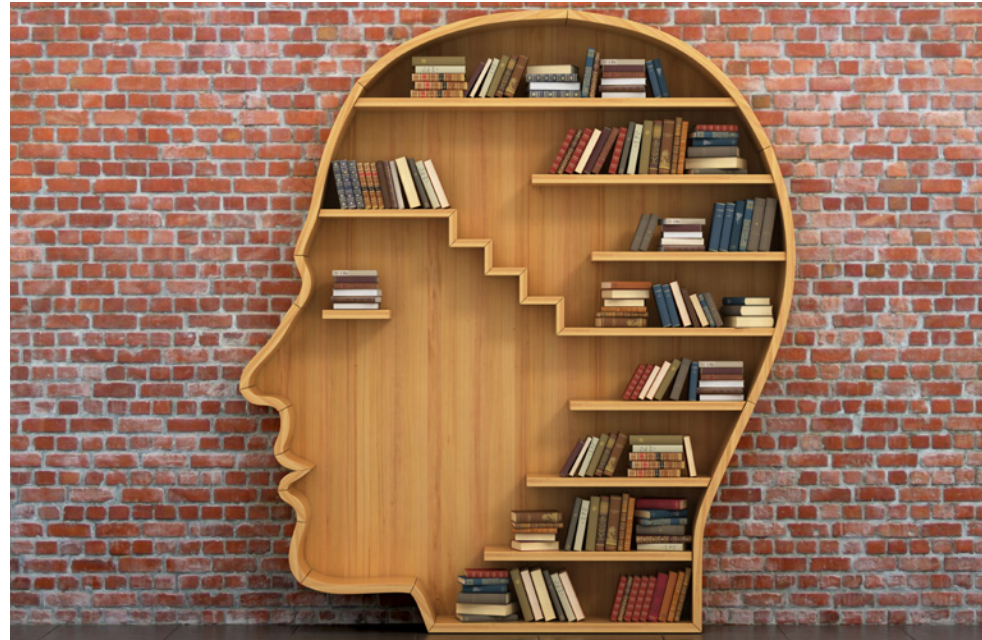
**The MA in Theatre Studies** is a research-based degree that offers students the opportunity to work with award-winning theatre scholars and practitioners. The program provides an integrated graduate education that merges theory and practice, and aims to prepare students for both doctoral-level study and careers in the academy.

- Students in either program can choose between the thesis or course work and major paper options in their applications.

### Application Deadline:

January 15, 2025

Entry: Fall



## Admission Requirements

The normal requirement for admission to the MA program is the equivalent of an Honours degree in English or Drama/Theatre Studies from a recognized post-secondary institution, with at least a high second-class standing (78%) in the last four semesters or the last two undergraduate years.

Students with degrees in other disciplines may also be considered. In very exceptional circumstances, an applicant may lack the required honours BA degree, but may be assessed as qualified to undertake graduate studies on the basis of other experience and practice and may apply for admission under alternate admissions criteria.

Applicants are not required to write the Graduate Record Examination (GRE).

## MA ENGLISH RESEARCH FIELDS:

- Colonial, Postcolonial and Diasporic Studies
- Studies in Canadian Literatures
- Early Modern Studies
- Transnational Nineteenth-Century Studies
- Sexuality and Gender Studies

## CAREER OPPORTUNITIES:

- Teaching
- Communications/Public Relations
- Publishing
- Arts Administration

## CONTACT INFORMATION

### Graduate Program Coordinator:

Dr. Paul Barrett  
519-824-4120 ext 53135  
[barrett@uoguelph.ca](mailto:barrett@uoguelph.ca)

### Graduate Program Assistant:

Pamela Keegan  
[setsgrad@uoguelph.ca](mailto:setsgrad@uoguelph.ca)

# Literary Studies / Theatre Studies in English: PhD

[uoguelph.ca/arts/sets](http://uoguelph.ca/arts/sets)

## Program

The PhD program in Literary Studies/Theatre Studies in English provides an opportunity for doctoral study that is unique in Canada and builds on the expertise of nearly thirty faculty members, who provide graduate students with an impressive range of approaches and scholarship, and research achievements. The program aims to give intellectual and practical academic training to a small number of students who demonstrate exceptional scholarly potential and who show keen interest in one or more of the PhD program's fields of specialization.

Graduate study in the program is supported by the extensive library holdings, which include the L.W. Conolly Theatre Archive. The program is directly affiliated with major research initiatives such as the International Institute for Critical Studies in Improvisation (IICS), the Orlando Project in Women's Writing, and the Canadian Writing Research Collaboratory (CWRC). Guelph faculty have an impressive record of publishing and many hold research grants from national and international agencies. All of this combines to provide students with a high level of awareness of scholarly debate in an academically supportive environment.

## Application Deadline:

January 15, 2025

Entry: Fall



## Admission Requirements

The normal requirement for admission to the PhD program is an MA degree in English or Drama/Theatre Studies from a recognized post-secondary institution, with a minimum GPA of A- in graduate work. Students with degrees in other disciplines may also be considered.

## Program Collaboration

Although students might choose to focus on either literary studies or theatre studies, the special opportunity provided by the PhD program is its contribution to the evolution of interdisciplinary work in the humanities. The collaboration allows for opportunities not available in more traditional doctoral programs, especially in theoretical work across the boundaries of literary and theatre studies. The program aims to foster in students a flexibility and creativity in defining their areas and methods of research that will serve them well in an academic job market that now seldom looks for narrow specialization or coverage of a single field.

## RESEARCH FIELDS:

- Studies in Canadian Literatures
- Colonial, Postcolonial and Diasporic Studies
- Early Modern Studies
- Studies in the History and Politics of Performance and Theatre
- Sexuality and Gender Studies
- Transnational Nineteenth-Century Studies

## CAREER OPPORTUNITIES:

- Postsecondary Teaching
- Communications/Public Relations
- Publishing
- Arts Administration

## CONTACT INFORMATION

### Graduate Program Coordinator:

Dr. Paul Barrett  
519-824-4120 ext 53135  
[barrett@uoguelph.ca](mailto:barrett@uoguelph.ca)

### Graduate Program Assistant:

Pamela Keegan  
[setsgrad@uoguelph.ca](mailto:setsgrad@uoguelph.ca)