

# Collaborative Specialization in Regenerative Medicine: MBS, MSc, MASc, DVSc, PhD

The field of Regenerative Medicine is revolutionizing how we develop treatments for a wide variety of diseases in humans and animals. This training program will provide students with a thorough understanding of Regenerative Medicine through a multidisciplinary approach, preparing them for successful careers in this dynamic emerging health sector.

[ovc.uoguelph.ca/biomedical-sciences/biomedical-sciences](http://ovc.uoguelph.ca/biomedical-sciences/biomedical-sciences)

## Program

Students must complete two required courses (BIOM\*6920 and BIOM\*6930) and conduct research related to Regenerative Medicine, culminating in a thesis or final research project report. Additional requirements will be specific to each student's primary program.

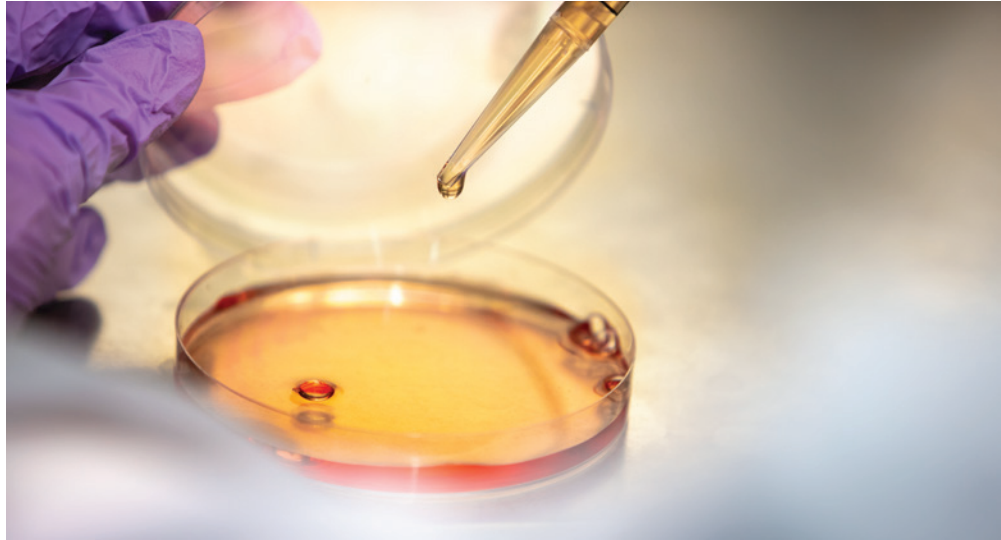
## Participating Programs

- Biomedical Sciences (MBS\*, MSc, PhD)
- Clinical Studies (MSc\*)
- Engineering (MASc, PhD)
- Human Health and Nutritional Sciences (MSc\*, PhD)
- Doctor of Veterinary Science (DVSc)

\*If course-based, must include a research project related to Regenerative Medicine

## Admission Requirements

Prospective trainees must initially meet department/program admission requirements in which they are enrolled. Students must first apply to their primary graduate program, while at the same time identifying their interest in enrolling in the collaborative specialization. If the student is admitted to their primary program as a course-based or thesis-



based graduate student, then the graduate program coordinator will review their application for suitability within the collaborative specialization. Upon admission, the student will register in their parent program and the collaborative specialization.

## Application Deadline:

Ongoing

## ARE YOU INTERESTED IN:

- Tissue engineering
- Developmental models
- Stem cell biology
- Endogenous regeneration
- Disease modeling and treatment

## CAREER OPPORTUNITIES:

- Research Scientist
- Policy/Ethics Advisor
- Industry Consultant
- Science Communicator
- R&D Director

## CONTACT INFORMATION

**Graduate Program Assistant:**  
Heather Hamilton  
519-824-4120 ext 54780  
[regenmed@uoguelph.ca](mailto:regenmed@uoguelph.ca)

## Co-Graduate Coordinators:

Samantha Payne  
519-824-4120 ext. 59434  
[spayne@uoguelph.ca](mailto:spayne@uoguelph.ca)  
Thomas Koch  
519-824-4120 ext 53719  
[tkoch@uoguelph.ca](mailto:tkoch@uoguelph.ca)