

# School of English and Theatre Studies: MA

Welcome to the School of English and Theatre Studies and its diverse strengths and extensive scope. Bring your curiosity! Pursue a wide range of literatures of different historical periods and geographical locations. Discover contemporary approaches to the study of literature and theatre, including ecocriticism, intermedial narrative and performance, digital humanities, and critical studies in improvisation.

Open doors to careers in teaching, administration, advertising, research, journalism, publishing, law, arts management, the media, information technology, creative writing, public relations, the entertainment industry and other enterprises requiring analytical, organizational, and creative skills in communications. Feed your mind, broaden your vocabulary, drive your future!

[uoguelph.ca/arts/sets](http://uoguelph.ca/arts/sets)

## PROGRAM

The MA in English is designed to provide students with an intensive introduction to graduate-level work in English literary studies within a flexible program. The study of literatures in English at the University of Guelph involves a sense of the histories and theories that inform current developments in the field.

Our students emerge from the program well prepared for doctoral study in English, and for careers that require a combination of critical thinking and cultural awareness.

The MA in Theatre Studies is a research-based degree that offers students the opportunity to work with award-winning theatre scholars and practitioners. The program provides an integrated graduate education that merges theory and practice, and aims to prepare students for both doctoral-level study and careers in the academy.

- Students in either program can choose between the thesis or course work and major paper options in their applications.

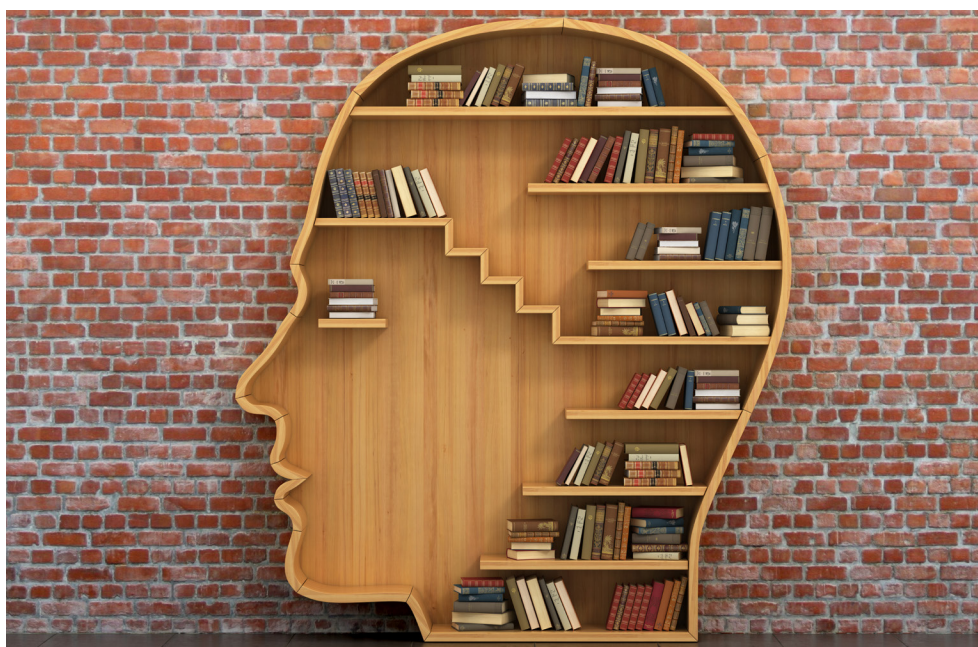
## MA ENGLISH RESEARCH FIELDS:

- Colonial, Postcolonial and Diasporic Studies
- Studies in Canadian Literatures
- Early Modern Studies
- Transnational Nineteenth-Century Studies
- Sexuality and Gender Studies

## Application Deadline:

June 1, 2025

Entry: Fall



## ADMISSION REQUIREMENTS

The normal requirement for admission to the MA program is the equivalent of an Honours degree in English or Drama/Theatre Studies from a recognized post-secondary institution, with at least a high second-class standing (78%) in the last four semesters or the last two undergraduate years.

Students with degrees in other disciplines may also be considered. In very exceptional circumstances, an applicant may lack the required honours BA degree, but may be assessed as qualified to undertake graduate studies on the basis of other experience and practice and may apply for admission under alternate admissions criteria.

Applicants are not required to write the Graduate Record Examination (GRE).

## CAREER OPPORTUNITIES:

- Teaching
- Communications/Public Relations
- Publishing
- Arts Administration

## CONTACT INFORMATION

### Graduate Program Coordinator:

Gregor Campbell  
519-824-4120 ext 53255  
[campbellg@uoguelph.ca](mailto:campbellg@uoguelph.ca)

### Graduate Program Assistant:

Pamela Keegan  
[pkeegan@uoguelph.ca](mailto:pkeegan@uoguelph.ca)



UNIVERSITY OF  
GUELPH