

International Development Studies: Master's Collaborative Specialization

Since 1991 International Development Studies (IDS) at Guelph has successfully linked with various discipline-based Master's programs on campus to provide a focal point for graduate teaching and research on international development topics. The Guelph Institute of Development Studies adds a specialization in International Development Studies onto a Master's program providing students with extra flexibility in the job market.

gids.uoguelph.ca

COLLABORATING PROGRAMS

IDS is a specialization that can be pursued through, but not limited to, the following programs across campus:

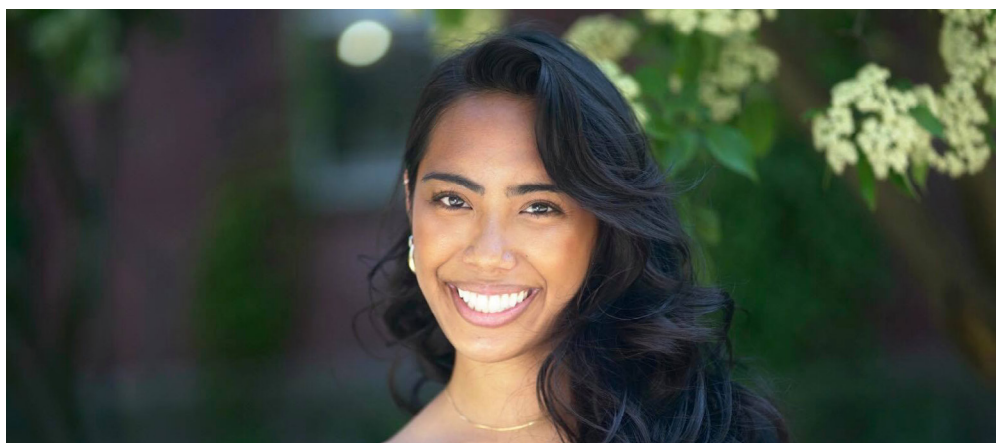
- Economics
- Engineering
- English
- Environmental Sciences
- Geography
- History
- Management
- Capacity Development & Extension
- Family Relations & Applied Nutrition
- Food, Agricultural & Resource Economics
- Latin American & Caribbean Studies
- Public Issues in Anthropology
- Rural Planning and Development
- Philosophy
- Plant Agriculture
- Political Science
- Population Medicine
- Public Health
- Psychology
- Sociology

ADMISSION REQUIREMENTS

Students in the collaborative Master's in IDS enter through one of the disciplinary/departmental programs listed above. Prospective students must first meet the specific departmental/discipline program admission requirements. Students choosing to enter the IDS specialization must demonstrate familiarity with the social sciences. All students seeking to enter the collaborative IDS specialization should indicate in their applications specifically why they are interested in development studies. Prior to being admitted, they must have completed one course in each of: 1) economics, 2) social science (e.g. Political Science, Sociology, Geography, Anthropology), 3) social science research methods course or equivalent.

Application Deadline:

Please see the application deadline for the collaborating program.



"I knew I wanted to pursue a degree that emphasized: interdisciplinary problem-solving, the cultivation of critical analysis, and engagement on cutting-edge issues. This unique program not only reinvented my academic experience, it introduced me to a vibrant intellectual community, provided opportunities for professional development, and exposed me to new world views and ways of knowing.

– Angela Asuncion (2022 MSc, Rural Planning and Development & IDS)

DEGREE REQUIREMENTS

Students in the collaborative Master's specialization in International Development complete the requirements for the departmental degree (most departments have requirements tailored to IDS) plus the IDS component. The latter comprises two courses: IDEV6200, Development Theory, Issues and Process and IDEV6300, Research and Analysis in a Development Context.

Students in the IDS specialization should focus their thesis/Major Research Paper on a broadly defined development-related issue. There should be at least one IDS-affiliated faculty member on the thesis/MRP Advisory Committee.

Each student is required to present their thesis/MRP research at an Annual Graduate Conference to which faculty and students as well as external development stakeholders would be invited, or an ad hoc graduate seminar as a substitute where participation in the Annual Graduate Conference would be prohibitive.

ARE YOU INTERESTED IN:

- Social & Economic Change
- Environment & Sustainability
- Social Justice and Human Rights
- Food Security & Health
- Gender & Identities

CAREER OPPORTUNITIES:

- NGO Coordinator/Director
- Policy or Program Analyst in the public or private sectors
- Development Officer

CONTACT INFORMATION

Graduate Program Coordinator:

Dr. Erin Nelson
519-824-4120 ext. 53543
enelson@uoguelph.ca

Graduate Program Assistant:

519-824-4120 ext 54217
ids@uoguelph.ca

International Development Studies: Doctoral Collaborative Specialization

The Guelph Institute of Development Studies offers a PhD Collaborative Specialization in IDS that is a first of its kind in Canada. IDS links together discipline-based PhD programs to provide a focal point for advanced research on international development issues. Based on the experience of faculty advisors in key collaborating departments, the program focuses on issues arising in international political economy, food security, environment and development, and other interdisciplinary cutting-edge topics in development.

gids.uoguelph.ca

COLLABORATING PROGRAMS

IDS is a specialization that can be pursued with, but not limited to, the following programs across campus:

- Economics
- Engineering
- Geography
- History
- Philosophy
- Critical Studies in Improvisation
- Environmental Sciences
- Family Relations & Applied Nutrition
- Food, Agricultural & Resource Economics
- Population Medicine
- Social Practice & Transformational Change
- Plant Agriculture
- Political Science
- Psychology
- Rural Studies
- Sociology

ADMISSION REQUIREMENTS

Students enter IDS through a collaborating department with a PhD program such as Sociology; Geography; Food, Agricultural and Resource Economics; Economics; Engineering; etc. In addition to meeting specific departmental admission requirements, IDS applicants are expected to have a strong background in the social sciences, experience in development research and/or development practice, and a stated research interest relating to international development. All students seeking to enter the collaborative IDS specialization should indicate in their applications specifically why they are interested in development studies.

Application Deadline:

Please see the application deadline for the collaborating program.



"As an aspiring interdisciplinary scholar with a background in International Relations (MA), Environmental Policy (MA), and Geography (BA), I found it hard to get a Ph.D. program that is reflective of who I am and what I want to be. I've been a development practitioner and wanted to acquire knowledge that would help me contribute to human development both in academia and the real world. After a thorough search both in Canada and abroad, I found the collaborative program, International Development Studies (IDS), and other disciplines at the University of Guelph as that distinct melting pot I was seeking. Such a blended genre, at the Ph.D. level, is unique."

– Emmanuel Tamufor (PhD, Geography & International Development Studies)

DEGREE REQUIREMENTS

Our PhD students complete requirements for the departmental degree as well as the IDS components. The latter include an interdisciplinary course on theories and debates, and a course relating student-selected research topics to the larger context of international development. It is expected that the student's PhD research will bridge two or more disciplines in a way that relates to the field of international development studies.

OUR STUDENTS

Students suited to the program will have a demonstrable track record of intellectual or practical engagement with issues arising in some area of international development. The program allows students to pursue development-related doctoral research associated with their discipline and prepares them for academic careers and/or careers in the field of development practice.

ARE YOU INTERESTED IN:

- Social & Economic Change
- Environment & Sustainability
- Social Justice and Human Rights
- Food Security & Health
- Gender & Identities

CAREER OPPORTUNITIES:

- NGO Coordinator/Director
- Policy or Program Analyst in the public or private sectors
- Development Officer
- Professor

CONTACT INFORMATION

Graduate Program Coordinator:

Dr. Erin Nelson
519-824-4120 ext. 53543
enelson@uoguelph.ca

Graduate Program Assistant:

519-824-4120 ext. 54217
ids@uoguelph.ca